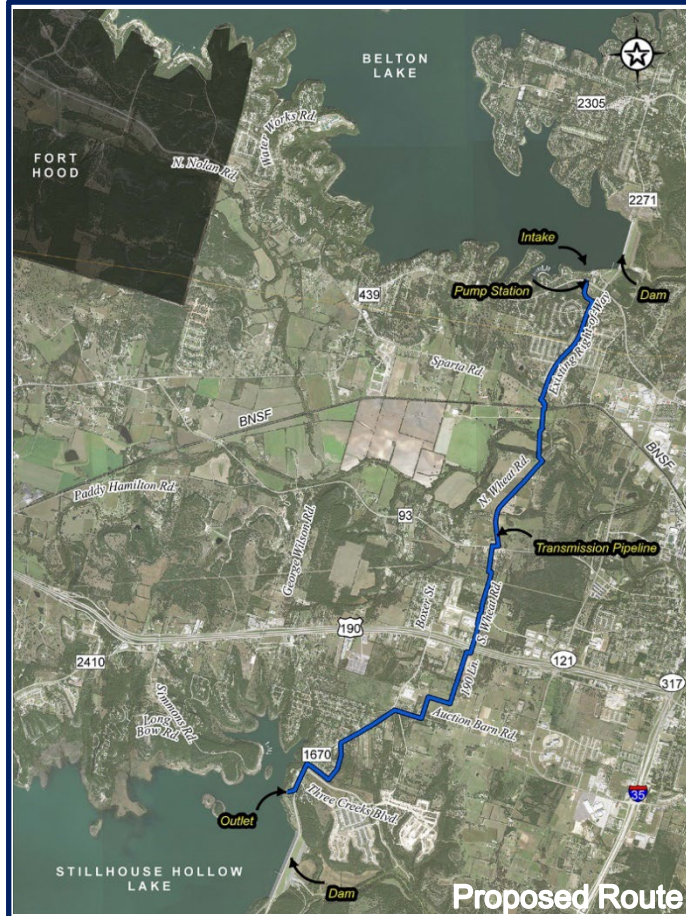




Belhouse Drought Preparedness



Architect rendering of proposed water intake facility at Lake Belton (facing north).

In 2005, the BRA authorized additional water supply contracts from Lakes Belton and Stillhouse Hollow to meet future demands in Bell, Burnet, Milam, Williamson, Coryell, and Lampasas counties. To meet these demands during times of drought, a raw water transfer system is required to manage this portion of the water supply system to ensure water can be accessed when and where it is needed.

The Project

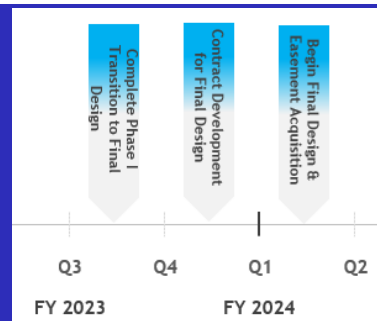
The raw water transfer system will consist of multiple components, including an intake and pump station at Lake Belton, an outlet at Stillhouse Hollow Lake, and a transmission pipeline between the lakes. Development of the transfer system will occur in multiple phases to carefully address project risk and to ensure the project configuration can be implemented in a cost-effective manner. Phase 1 includes evaluation, feasibility, and preliminary design, along with significant jurisdictional and environmental agency coordination and public outreach. Future project phases will include final design, environmental permitting, contractor procurement, and construction phase services.

Current Project Status 4/14/2023

- Preliminary Engineering Report has been finalized and periodic coordination is occurring with the USACE for the intake and outlet location and design.
- Currently developing the contract for Phase 2 which will include final design services, environmental permitting, easement acquisition, and continued public outreach.

Planned Schedule

Note: BRA Fiscal Years run Sept. to Aug.



Budget Summary

FY 2023 Budget	\$2,652,000
FY 2023 Project Expenses (As of 2/28/2023)	\$113,674